



WESTPORT HOUSE

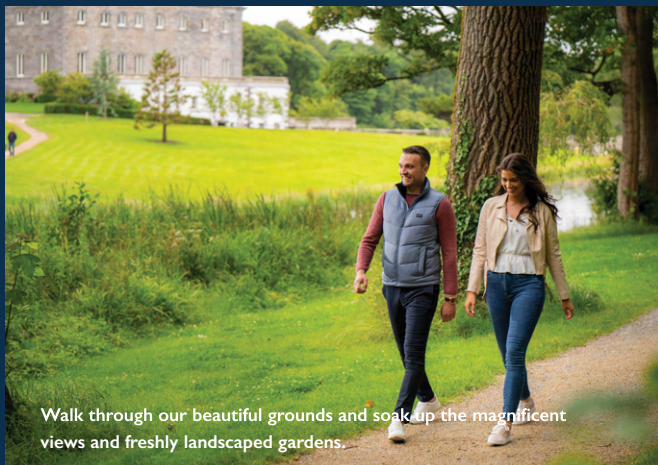
Historic House, Grounds & Guided Tours



Westport House

www.westporthouse.ie

With the picturesque grounds of the Westport Estate on your doorstep, explore the beautiful countryside surroundings with endless walking, hiking and cycling routes, local fishing lakes and of course the vibrant town of Westport itself with an array of great Irish pubs.



Walk through our beautiful grounds and soak up the magnificent views and freshly landscaped gardens.



Guided tours are available for groups of fifteen or more.

6 PERMANENT EXHIBITIONS

- Grace O'Malley & the Browne family (*basement*)
- Howe Peter "Champion of the Slaves" Exhibition (*bedroom floor*)
- Westport Town & The Browne Family (*basement*)
- Lady Sligo's Letters: Westport House & The Great Famine (*bedroom floor*)
- Westport House – 1960-2010 – The Last 50 years (*bedroom floor*)
- Famous Visitors to the West – Waxworks Exhibit (*bedroom floor*)

To learn more or book tickets check out www.westporthouse.ie

WELCOME TO WESTPORT HOUSE

On behalf of the Hughes Family, you are most welcome to Westport House. Built in 1730 by the Browne family, the foundations of Westport House lie on castle ruins dating back to the 1500s, which belonged to infamous Pirate Queen, Grace O'Malley, who ruled the seas from Scotland to Spain. Be sure to visit her dungeons in the basement – but be careful you don't get locked in!

In the 18th and 19th century, life in the 'Big House' was a lavish and almost theatrical experience, and as you explore our historical home, we invite you to discover the fascinating story of Westport House.

Lord Sligo gave much consideration and planning towards the first impression the town created upon a visitor's arrival, extensively planting in the grounds and gardens before guests arrived in to the "jewel in the crown" itself – the house. Combined with its magnificent art and fashionable furniture, it is no wonder the house was called the most beautiful house in Ireland by William Makepeace Thackeray.

It is the reason that the house was called the most beautiful house in Ireland by William Makepeace Thackeray. Today, we are presenting the house as it would have been in those years.

Our goal is to bring you back in time so you can see how people lived their lives in the 18th and 19th century. We hope you'll enjoy exploring the 30 rooms open to the public over three floors, showcasing life in the big house.

It is notable that the antiques and artwork displayed are mostly all original to the house. Through our exhibitions, you'll learn about the families behind it and the impact that this Palladian mansion has had on the local and wider communities. We hope you enjoy the stories spanning 500 years from a Celtic clan to landed gentry and the sale of the house in 2017 to our family who used to be tenant farmers on this estate.

Please make yourself at home at our house and enjoy your visit.

The Hughes Family

HISTORY OF WESTPORT HOUSE

Built on the ruins of a castle belonging to the famous Pirate Queen, Grace O'Malley, this resplendent manor is sited on her "stomping ground" dating back to the 16th century.

Today, our dungeons are all that remain of her original Tower House. Colonel John Browne - whose family originated from Cowdray Castle in Sussex, England - came to Westport in the mid-1600s and married Grace O'Malley's great-great grand-daughter, Maud Bourke.

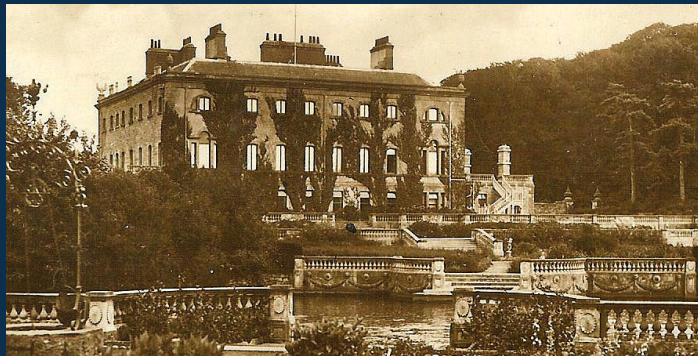
Their grandson, John Browne, 1st Earl of Altamont, built the first phase of Westport House in 1730 with one of the most famous architects of the time, Richard Cassels.

Subsequent phases of the house were built by prominent architects James Wyatt and Thomas Ivory.



Bronze statue of Grace O'Malley by the bridge by sculptor, Michael Cooper, brother of Jennifer Altamont, 10th Marchioness of Sligo

THE GROUNDS & GARDENS



1910 - The family enjoy the river and pleasure lake at the House bridge

The grounds and garden were added in three phases:

1. 1730's:

The formal style - the first extensive tree planting took place on the estate and the cascades within the water were established. Westport's Carrowbeg river was a winding waterway but was straightened or "canalised" and the original avenue followed the river to the house.



Aerial view of Westport House showcasing the extensive gardens

2. 1800's

This was a more natural style based on the influential design of Capability Brown. During this time, the bridge was built at Hotel Westport and the avenue was realigned to where you can see it today. A mass of tree planting was undertaken and the whole landscape was specifically designed to look natural.

3. 1914/1915

This phase heralded a return to the formal style with the creation of the Terraces and the Italianate gardens which were highly manicured and meticulously designed.



Jeremy and Jennifer Altamont and their daughters Sheelyn and Karen Browne pictured in 1967 creating the riverside path.

Westport House was opened to the public in 1960 by the 10th and 11th Marquesses of Sligo, Denis Browne and his son, Jeremy. Jeremy was the driving force behind the concept of making Westport House a tourist attraction in order to sustain the property.

Along with transforming the house into a museum, he and his daughters conjured all kinds of initiatives to protect and maintain the house, including a zoo, caravan and camping park, Pirate Adventure Park as well as hosting seasonal events and music festivals.

WITH RESTAURANT,
CAFE, FOOD TRUCKS,
ACRES OF WOODLAND,
CARAVAN & CAMPING,
GLAMPING VILLAGE,
ADVENTURE PARK,
EVENTS & AN IMMERSIVE
DIGITAL GAMING ZONE,
WESTPORT ESTATE IS
SO MUCH MORE THAN
JUST AN HISTORIC HOUSE.



Interactive Gaming



Adventure Park



For Kids of All Ages



Climbing Wall



Outdoor Events



Glamping Village



Swan Pedalos



Escape Into Nature



Dog Friendly

**DOWNLOAD
OUR FREE
TOUR APP**

*Download our Free
Guided Tour App to
your mobile device*



From corporate events to festivals to weddings
and everything in-between, Westport Estate
invites you to host your special event at our
historic, 400-year-old home and grounds.

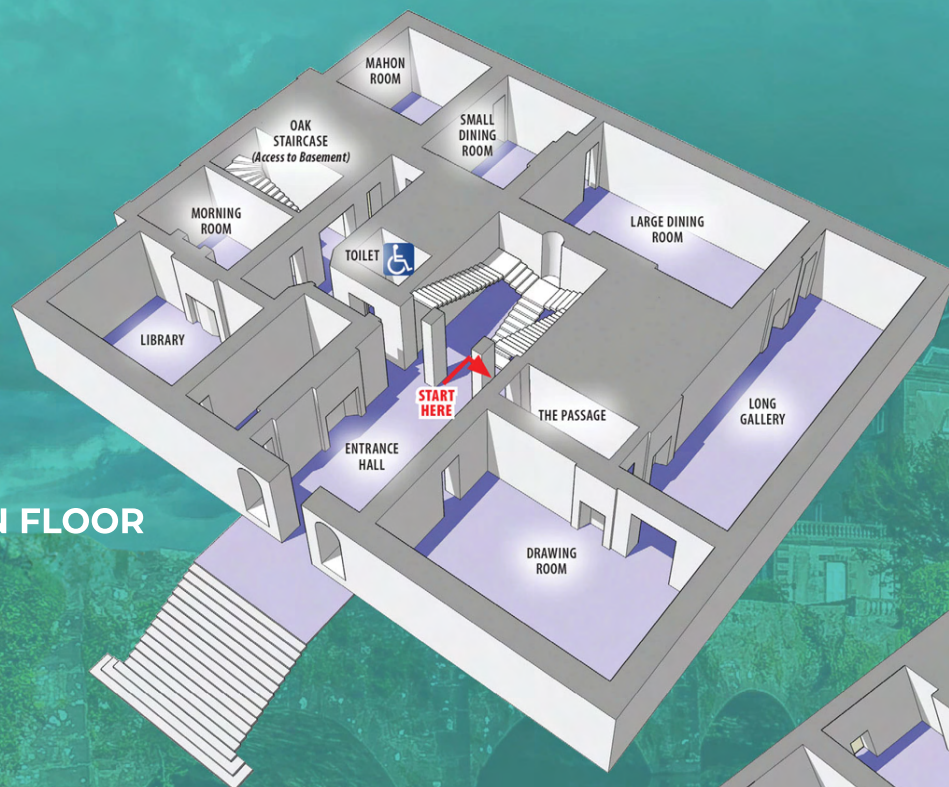
Email darren@westporthouse.ie or
Talk to us today on **089 978 7898**

To learn more, see what's on, or book tickets check out
www.westporthouse.ie

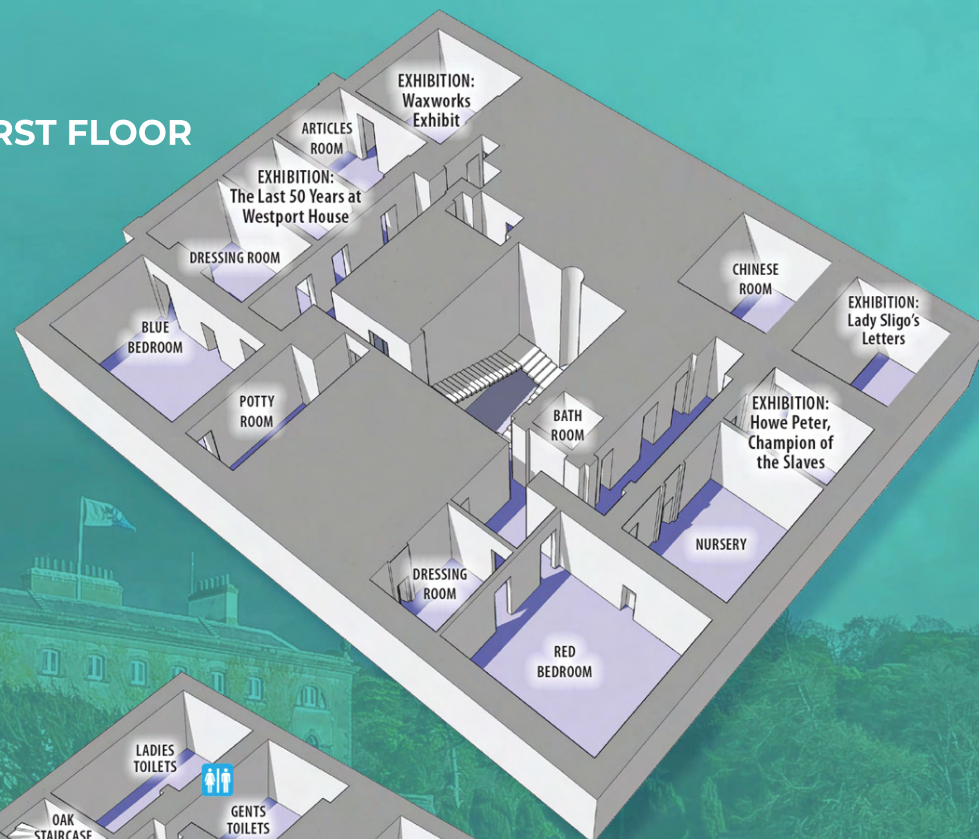
FLOOR PLANS

Enjoy over thirty rooms open to the public over three floors with six permanent exhibitions

MAIN FLOOR



FIRST FLOOR



BASEMENT



GUIDELINES

- No food and drink is permitted inside Westport House.
- No touching art work or artefacts.